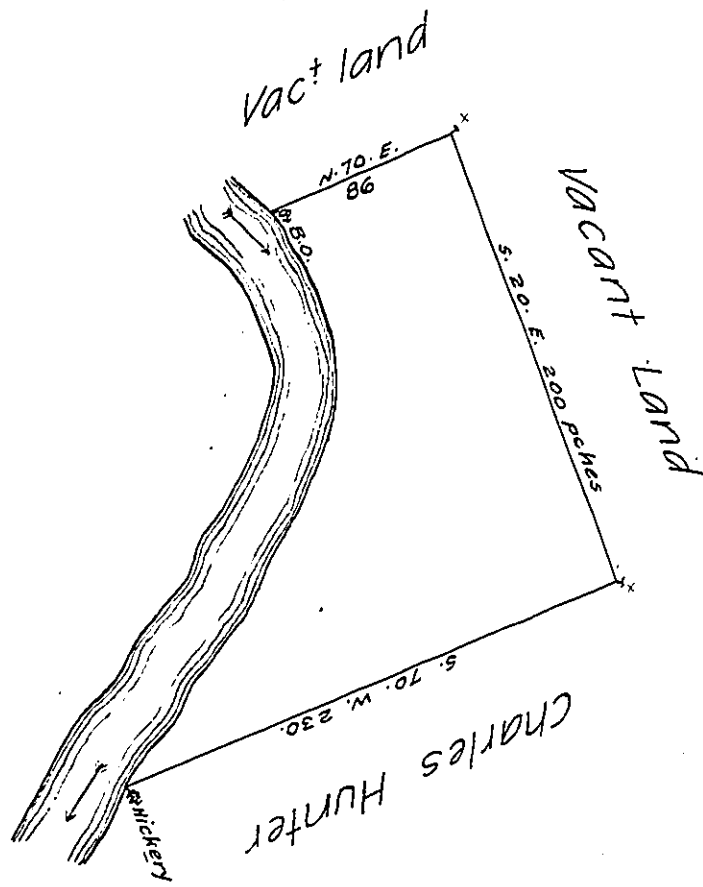


Pg. 25-7



By Virtue of a Warrant from the Proprietaries dated the 27<sup>th</sup> day of January 1733. Surveyed to Henry Wolf the Above described that of Land Situate on y<sup>e</sup> East Side of Shulkill River, in the County of Philad<sup>a</sup> containing 150 Acres with the Usual Allowance of Six  $\frac{1}{2}$  Cent. Surveyed <sup>26<sup>th</sup></sup> Septem<sup>r</sup>: 1735.

\* Say February.

By Nich<sup>o</sup> Scull. — —

IN TESTIMONY that the above is a copy of the original remaining on file in the Department of Internal Affairs of Pennsylvania, made conformably to an Act of Assembly approved the 16th day of February 1833, I have hereunto set my hand and caused the Seal of said Department to be affixed at Harrisburg, this third day of April 1907.

*[Signature]*  
Secretary of Internal Affairs.